

FITZ

MARBELLA

FITZ

Where technology and music come together in a versatile space to redefine
Marbella nights.

Inspired in the crazy XX's and the iconic F. Scott Fitzgerald it seeks to break with
what has been seen, what is expected and what is imagined.

Fitz is destined to write history.



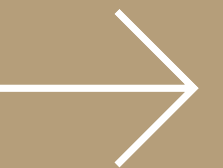
FITZ

ENTRANCE

FITZ



1/ OUR SPACE

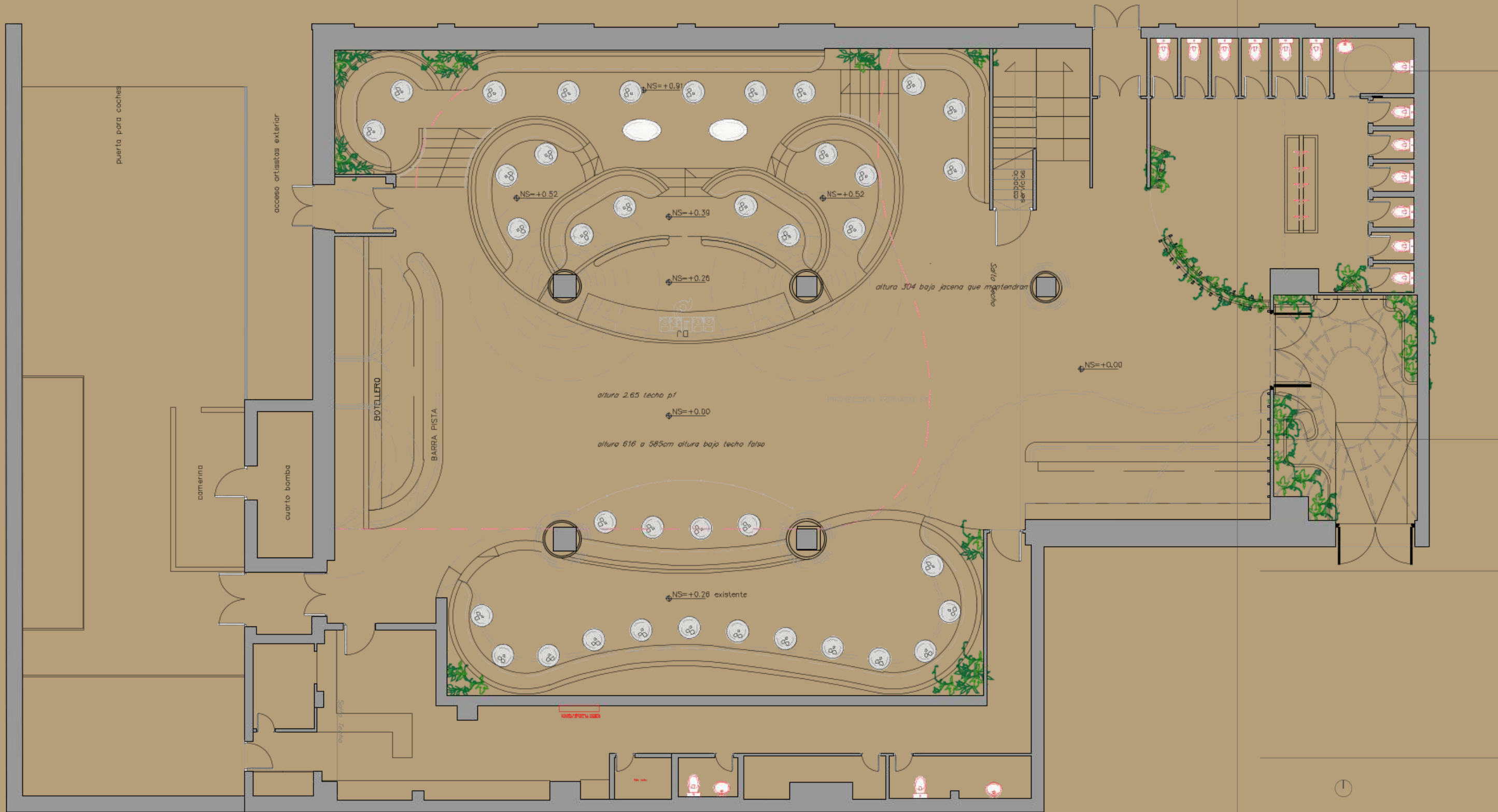


FITZ

MARBELLA

ODDDO

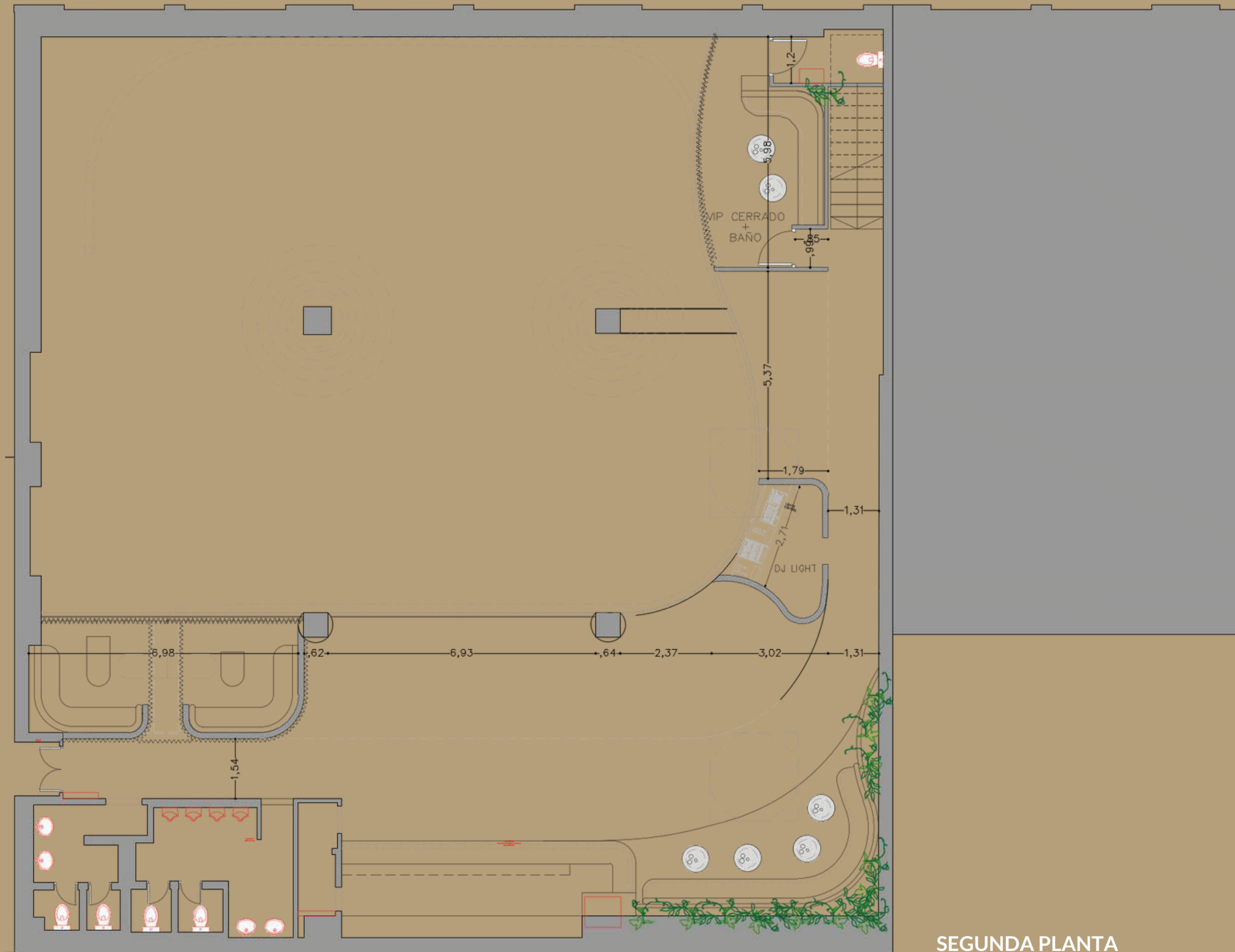
STAGE



MAIN ROOM



TERRACE

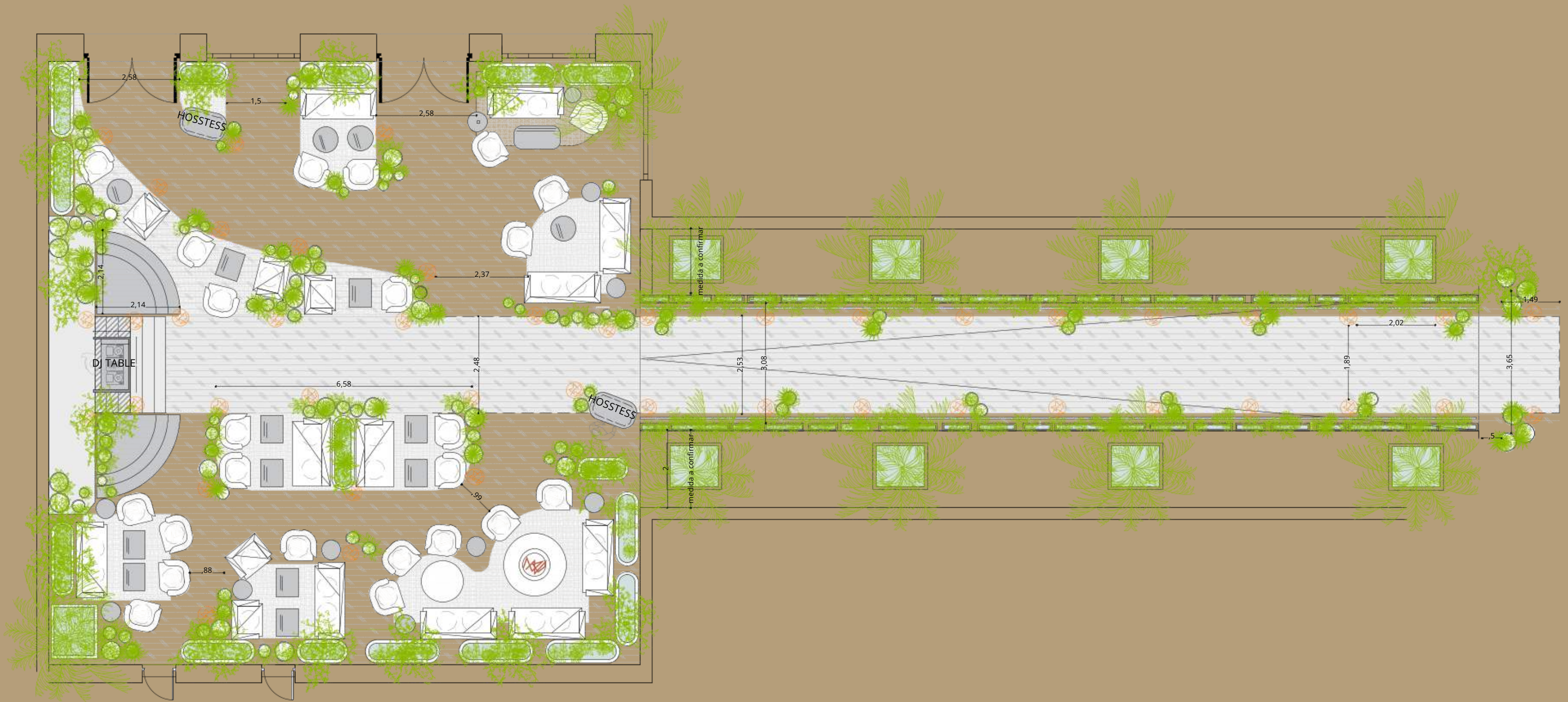


SEGUNDA PLANTA



TERRACE



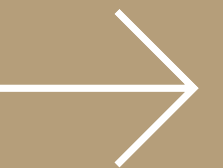


PLANTA TERRAZA

ENTRANCE AREA



2/ EVENTS





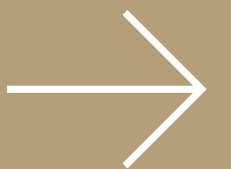
CONOR MC GREGOR STAGE



CONOR MC GREGOR STAGE

A versatile place where you can hold corporate events, open-format concerts,
unforgettable sessions with international artists of the moment or anything you
can think of.

The possibilities are endless.





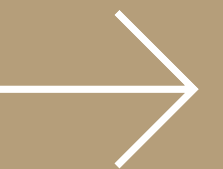
CATERING

PACO OSUNA

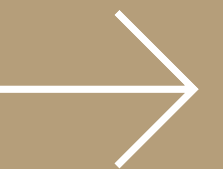
PACO OSUNA MAIN ROOM



2.1/ LIGHT INFORMATION



Lighting is one of the fundamental keys of our space, thanks to it's great capacity for customization, thus recreating any possible atmosphere, both for day and night.



FIXTURES

26 ACME SOLAR WIND 6 ACME
SUPER DOTLINE 6 CHAUVET
STRIKE M STROBE 12 MARTIN
RUSH MH 6 WASH

4 LASER FB4 6W
2 UNIKE LOOK HAZER MACHINE
2 CONFETTI BLASTERS XL

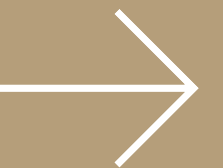
FOH
MA3 COMMAND XT + FADER WING
80ml with MADRIX SYSTEM
Near 100m2 screen with RESOLUME ARENA

STAGE (with DJ set)

FITZ
MIKY WOODZ
FITZ

MIKY WOODZ

2.2/ SCREEN SYSTEM



DIMENSIONS 66,92M²

PIXEL PITCH 3 MM

DRIVE MODE CONSTANT CURRENT

MODULE RESOLUTION 64DOTS × 64DOTS

MODULE PIXELS 4096DOTS

SCREEN PIXELS 7.068.256 DOTS

BRIGHTNESS 600-800CD/ m²

DRIVING METHOD 1/32 SCAN AND CUSTOM

VIEW ANGLE HORIZONTAL 140°

VERTICAL 140°

GRAY SCALE 16384*16384*16384

COLORS 4.39 TRILLION

REFRESH RAT ≥3840HZ

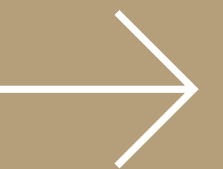
CONTROL SYSTEM NOVASTAR H SERIES

CONTROL SOFTWARE RESOLUME ARENA MEDIA SERVER



JASON DERULO

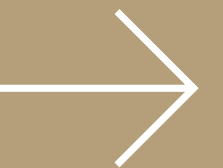
2.3/ SOUND SYSTEM



SOUND PA 4 L'ACOUSTICS

A15 FOCUS 2 L'ACOUSTICS A15 WIDE 4 L'ACOUSTICS SUB218 BACK FILL 4 L'ACOUSTICS
ARCS 2 L'ACOUSTICS SB15 DJ BOOTH 2 L'ACOUSTICS ARC FOCUS 4 L'ACOUSTICS SB18 VIP
P0 DELAY 2 L'ACOUSTICS A10 HALL DELAY 1 L'ACOUSTICS X8 VIP P1 FRONT DELAY 2
L'ACOUSTIC A10 1 L'ACOUSTIC SB15 VIP P1 SIDE DELAY 2 L'ACOUSTIC X12 1 L'ACOUSTIC
X8 BACKLINE 1 PIONEER DJM-V10 MIXER DJ 4 PIONEER CDJ3000 REPRODUCOR DE CD
FOH MIDAS MR32

3/ SOME DETAILS



FITZ



DRESSING
ROOM

LAMISA



ENTRANCE

TOILETS



**“WHOEVER SAYS FROM MADRID TO HEAVEN HAS NEVER
BEEN IN MARBELLA”**